

CAWS AGM



CAWS Annual General Meeting

Thursday 12 September 2024 in the Methodist Chapel, Whitley, commencing at 1900

Agenda:

1. Welcome /Apologies
2. Officers Reports:
 - 2.1 Chair
 - 2.2 Treasurer
 - 2.3 Secretary
3. Election of Chair
4. Election of Committee
5. The Lime Down Solar BESS Campaign – Peter Richardson
6. Community Emergency Group – Jonathan Rumens
7. Wiltshire Council Update - Cllr Phil Alford
8. CAWS Committee meetings – proposed programme for 2024/2025
 - Wednesday 30th October
 - Remaining meetings to be agreed by new committee.
9. Date and venue of next meeting:
 - Wednesday 30th October 2024 at 1900, The Head Shed, First Lane. Whitley
10. Closure.

Dan Pike, Sec.
August 2024

About CAWS

- Represents local residents and businesses
- Seeks to achieve changes and improvements to the quality of life and wellbeing of local people
- Promotes community cohesion
- Coordinates community action
- Increases awareness and consults on future developments
- Provides a link between residents and businesses and the local authorities
- Run entirely by volunteers
- No formal authority or power
- No formal funding
- Commitment to recycle any funds raised through local events etc. back into the community





CAWS AGM

12 September 2024

Chairs Report – Peter Richardson

Response to Planning Consultations

- Local Plan
- Neighbourhood Plan 2A
- Neighbourhood Plan 2B

The Joint Melksham Neighbourhood Plan (JMNP) needs your input.

The JMNP has been updated by a steering group of local representatives and has drawn on wider consultation with our community.

We now need your feedback and input into the overall draft updated Plan - JMNP2. A lot of work has been done, which you can find out about on the Plan website. However, the key document we need your input on is the draft updated Plan - JMNP2. You can view this online at www.melkshamneighbourhoodplan.co.uk (see the link below).

A survey has been prepared to collect your views on the draft updated Plan - JMNP2. We would like to hear your comments, but we think that the best way to do this is to complete the survey online.

Please only submit this questionnaire if you have not already done so. For more information, contact contact@melkshamneighbourhoodplan.co.uk.

The survey can be accessed by clicking on the link below.

The public consultation begins on 26 October 2024.

The survey questions are linked to the draft updated Plan - JMNP2. You will need to have a copy of it to refer to when you complete the survey.

Once the consultation period is over, the steering group will meet with the Council and the Neighbourhood Plan Steering Group to discuss the feedback received and agree on how the Plan will be updated.

The revised Neighbourhood Plan will be submitted to the Council to give it full force in the planning system. You will be consulted on the Plan when it is put to a referendum.

Anyone who has any questions about the survey or the Plan, please contact contact@melkshamneighbourhoodplan.co.uk.

Attend the public consultation event on Thursday 26 October 4pm-7pm, Friday 10 November 4pm-7pm or Saturday 11 November 10am-12pm.

Thank you.

Wiltshire Local Plan

Publication Stage Representation Form

Ref: (For official use only)

Please return to Wiltshire Council, by 5pm on Wednesday 22nd November 2023.

By post to: Spatial Planning, Planning Directorate, Wiltshire Council, County Hall, Bythesea Road, Devizes, Wiltshire, SN8 1LH

By e-mail to: spatial@wiltshire.gov.uk

For further information, please contact spatial@wiltshire.gov.uk

This form has two parts:

Part A – Personal details

Part B – Your comments

Part A – Personal details

Please note the following:

- We cannot release your contact details to other organisations.
- All information provided will be treated as confidential.
- All personal data will be deleted after the consultation period has ended.

If an agent is appointed, please complete the form on their behalf.



CAWS Neighbourhood Plan 2B (NP2B) Submission

Introduction

CAWS welcomes the publication of the Draft Joint Melksham Neighbourhood Plan 2 for a second round of consultation.

The CAWS submission on NP2 dated 27 November 2023 is extant and continues to reflect the CAWS position except as set out below.

CAWS BESS Working Group

CAWS supports and endorses the separate submission by the CAWS BESS Working Group dated 6 August 2024.

Middle Farm

We note that the overall housing numbers proposed for Middle Farm are broadly the same as proposed in NP2A but on a single site combining the previous separate Plots A and B.

As there are no other material changes at this time, we consider that our comments/rationale submitted under NP2A should continue, i.e. no more than 38 houses on the new combined plot.

Whitley Farm

We note the key change is a 50% increase in the proposed housing numbers compared with NP2A.

We are concerned about the proposed increase in density on this important heritage site and therefore we submit that our NP2A comments are still relevant, i.e. no more than 10 houses.

Housing Numbers Narrative

It is not possible to reconcile the proposed housing numbers in NP2B with the draft Local Plan - simple calculations suggest that NP2B is allocating significantly more housing than required. The community voice on housing numbers is very clear and that is that there are already too many new houses in the Melksham area with significant over delivery in the past (compared with NP1 and the Core Strategy).

We understand the driver to allocate the proposed 210 house site and care home and we continue to support regeneration of the Cooper Tires site, but it is important that NP2B sets out a narrative/reconciliation so that the community can see why NP2B housing numbers are higher than the Local Plan.



Speedwatch



Speedwatch Team

- has increased to 5 trained volunteers, enabling us to add a third site - we now have 2 on Corsham Rd and 1 on Folly Lane
- the average number of vehicles an hour at each site is 500

Wiltshire's Speed Enforcement Team

- has increased so there are more traffic officers carrying out speed checks. They also check MOT, insurance and Points Totter and analyse camera footage for other offences such as seat belts and mobile phone use
- speeds of up to 52mph have been recorded

SIDs

- cover 3 sites in our area: West Hill, Shaw Hill and Corsham Rd. They are usually deployed every few weeks.

We would love more volunteers!



Other Road Safety – “Marginal Gains”



Complete

- SLOW signs Corsham Road, Shaw Hill, Folly Lane
- Road Surface & Pothole Repairs

Pending

- Halo Lights on Zebra crossing
- School Travel Plan
- Pedestrians in Road (PIR) signs (1- opposite Pear Tree, 2 – west of junction of 150 – 157c West Hill)
- SLOW markings at PIR locations
- New Sign at West Hill gateway (offside) "WHITLEY - Please drive carefully"



A Short History of Whitley and Shaw and the Surrounding Area



Peter Richardson

- Sold out, but...
- Available at local libraries and Swindon and Wiltshire History Centre
- 2nd Edition largely complete but publishing delayed until 2025
- Atworth History Group, Monday 7 October at 7.30 PM at Atworth Village Hall









Chatty Bench



Stay Connected
Please sit here if you are happy to chat to passers by

Topography Signs

The Area North & West of Whitley



1 Whitley means a "white clearing" in a wood and is mentioned in the Domesday Book. Whitley House, Whitley Farmhouse and Slade's Farmhouse date to the late 17th century and Westlands Farmhouse and Northey's Farmhouse to the early 18th. The Methodist Chapel was originally a house purchased in 1828 and the Whitley Reading Rooms was donated by local benefactors in 1904. Cottages were added to the village throughout the 18th and 19th centuries. Throughout the 19th century many men from Whitley worked in the nearby quarries and local farms.

2 The Roman Road ran from Bath (Aqua Sulis) to London (Londinium) via Silchester (Calleva Atrebatum). For much of its path in this part of Wiltshire it follows the course of Wansdyke, which was a massive linear earthwork said to have been built to halt the Saxon's advance into the South West.

3 Park Lane Quarry was opened in 1880 but was scaled in 1960 due to a decline in demand, rising costs and propensity to flooding. It reopened in 2013 and is now in full production again. Walkers might notice what looks like large green oil drums in a line above the Roman Road. These are actually concrete structures at the top of ventilation shafts and they give some sense of the size of the quarry below.

4 Eastlays Quarry was opened in 1887. It was acquired by the War Office in 1930 and developed as part of Central Ammunition Depot Corsham and was in use by the MOD until 1966. Since the mid-1980's it has been used as a high security bonded warehouse for alcohol and private collections of wine.

This sign has been placed by CAWS with the support of Melksham Without Parish Council to mark the Jubilee of Queen Elizabeth II in 2022. The purple lines on the map show the local footpaths – use the QR code to get a copy. Please keep to the footpaths at all times as they cross agricultural land. For more information on the local history please see the CAWS book "A Short History of Whitley and Shaw".

5 Neston House has been owned by the Fuller family since c 1790. The Fuller family became known for their participation in the Fuller Smith & Turner brewery in Chiswick, producer of Fuller's London Pride ale. Noted explorer John Hanning Speke of the Fuller family, died from a self-inflicted gunshot wound while hunting partridge at Neston Park in 1864. The estate has been used as the filming location for a number of TV productions.

6 Brittle Wood is famous for being one of the remaining habitats of the rare Bath Asparagus plant - *Oreithogalum Pyrenaicum* - which it is believed was originally introduced to Bath two thousand years ago by the Romans - please do not pick it. There was once a well in the middle of the Wood, and the wooded area close to Brittle Wood was known as the Plantations, and is still a good area to see Bluebells.

7 Buttonhole Wood contains a pond there that is still used as a "holding pond" to help protect Whitley from flooding. Some say that the wood was originally called "Buckwino Wood" but it is more likely that the name derives from the fact that there was once a large double ditch here which looked a little like a buttonhole from above. This double ditch originally ran almost the length of the entire footpath to Whitley.

8 The Pear Tree is a Grade II listed building dating from about 1690 making it one of the oldest buildings in Whitley. It was probably originally a small farmhouse. Ushers Brewery acquired the property in 1832 and it has been a pub in Whitley ever since.

9 Atworth was referred to by King Aethelred II in a charter of 1001 which gave the Manor of Bradford on Avon to the Abbes of Shaftesbury. Past names for the village have included Areforde, Atterwarde, Ateworthe and Atford. The present-day civil parish of Atworth was created in 1884.



Shaw and the Surrounding Area

The manor of Shaw, meaning "copse", dates to at least the 13th century. By 1335 there was a chapel of St Leonard. At some time before 1669, Shaw became a stronghold of the Quakers (Society of Friends) with Friends travelling from around the area to meet here. Shaw Farm and The Old Malt House date from the 17th Century, Shaw House was rebuilt in 1711 and Shaw Brewery, now the home of Rocking Horse Nursery, was probably founded around 1800. Throughout the 19th century many men from Shaw and Whitley worked in the nearby quarries.

1 Christ Church was built in 1837-1838 but rebuilt in 1905 in the Arts and Crafts Gothic style and is a Grade II listed. The tower rises in four stages; the lowest forms a porch and baptistry; the buttresses of the belfry stage terminate in life-sized statues of saints; the parapet is embattled, and the slender spire is covered with oak shingles which were replaced in 2017.

2 Shaw Church School was probably founded around 1848 and extended in 1871. Before then the village school was thought to be at what is now known as The Grange Coach House, on Middle Lane in Whitley and the site of the old school bell can clearly be seen at the northern end of the building.

3 Shaw Hill House was built before 1825. It was taken over by Belane School during the Second World War where many evacuees were educated. It was demolished around 1965 and is now the site of The Beeches which was built in 1968. Some signs of the original Shaw Hill House footprint remain including old garden bank along the western side of the playing field and there are some boundary walls and outbuildings, including a magnificent dovecote, behind Belane Place and along the A365.

4 Shaw Village Hall was built in 1976 in readiness for the Queens Jubilee. Shaw Playing Field was previously the front garden of Shaw Hill House.

5 The Old Malt House is Grade II listed and dates from the 17th Century. The 18th century gate piers and iron railings were retained when the building was re-fronted in the 19th century. From the later 17th century to early 19th, the house was the home of the Marshman family who had many Quaker connections but were also prosperous yeoman farmers and malsters.

6 Shaw House was bought by Thomas Smith in 1701 who rebuilt it in 1711. After 1759 the property belonged to the Neale family and in the early 19th century the house was let as a private school by Sir Harry Burrard. It was extended around 1840 and in 1844 it was bought by the Stancomb family. It became a home for the elderly, probably around 1949 and around 1995 it was separated into three residential properties, namely, Shaw Court, Shaw Grange and Shaw House itself.

7 The Golden Fleece, now known as Il Vello D'Oro (which is Italian for The Golden Fleece), has been a pub since at least 1838.



Atworth is about 1.5 miles east of Shaw and dates to 1001. The clock tower was erected at the side of the Bath Road in 1887 to commemorate Queen Victoria's golden jubilee, and has later served as the parish war memorial. The original Cottles manor house which was 1770's has been the home of Stonar School since 1939. Broughton Gifford which dates from 1260 and possibly earlier is about 2 miles south of Shaw. The parish includes the hamlets of Norrington Common and The Common. St Mary's Church dates from the 13th century.

This sign has been placed by CAWS with the support of Melksham Without Parish Council to mark the Jubilee of Queen Elizabeth II in 2022. The purple lines on the map show the local footpaths – use the QR code to get a copy. Please keep to the footpaths at all times as they cross agricultural land. For more information on the local history please see the CAWS book "A Short History of Whitley and Shaw".



Telephone Boxes



GRAND



CAR BOOT

CANCELLED



@ Shaw Village Hall

Saturday 10th August 1-4pm

Cars £6 / Vans £10 / Traders please contact: 01225 282656

Disabled parking and paid parking (£2) at the hall

Free parking at Corsham Road (next to golf club)

Call for Volunteers



- Organising Committee for Summer 2025 Event – Chair, Team and Volunteers
- Speedwatch
- Telephone Box Painting
- Technical Experts for BESS Stage 2 (See later)

And finally...

- Congratulations to Whitley Stores
- Thank you, Mike and Leila, Evergreen Meadow
- And my thanks:
 - CAWS Committee
 - CAWS Officers
 - BESS Working Group
 - CEG
 - Our members, residents, volunteers, local businesses, local councils and other community groups, all of whose support is essential and appreciated





CAWS AGM

12 September 2024

Treasurer's Report – Joan Boorer



CAWS AGM

12 September 2024

Secretary's Report – Dan Pike



CAWS AGM

12 September 2024

Elections



CAWS AGM 2024
BESS Update
Peter Richardson

Lobby, Meet, Reinforce, Repeat

“Whitley is the wrong location for a BESS”

Front 1 – Whitley is the wrong site

- Reasons
- Developer meetings/correspondence
- Question bank
- Demonstrate that Stage 1 Consultation was ineffective
- Request to be consulted on the Statement of Community Consultation for Stage 2 Statutory Consultation
- Respond to PINS et al on the EIA Scoping Report
- Neighbourhood Plan comments
- Cumulative Impact and the “necessity” of such facilities
- Leaflets and posters

Front 2 – BESS Facilities are unsafe, not properly regulated, do not contribute to net zero ambitions and result in higher electricity prices

- Research
- Highlight safety, regulatory, economic, and consumer issues with regulators and other stakeholders
- Build networks & make contacts
- Let LDS know what we are up to (but not the detail)
- Prepare for the next stage of the NSIP process

March	Stage 1 Consultation launched Meeting with LDS
April	MWPC Planning Committee Meet the Developer Corsham Meet the Developer Shaw MP Site Walk Community Meeting Community Drop In CAWS Submission
May	WC Cumulative Impact Motion/Debate
June	Meetings with candidates First WG meeting MWPC meeting with LDS LDS Questions V3 Letter to Lanpro Stage 1 Consultation ineffective Request to be included in SoCC

STOP LIME DOWN BATTERY STORAGE IN WHITLEY

Community Meeting
Wednesday 17 April, 6.00-8.00pm
Shaw School Hall

STOP LIME DOWN BATTERY STORAGE IN WHITLEY

Walk the site with Michelle Donelan MP
Friday 12 April, 9.00am
Meet at The Pear Tree, Top Lane

STOP LIME DOWN BATTERY STORAGE IN WHITLEY

Meet the Developers
Wednesday 10 April, 3.30-7.30pm
Corsham Town Hall
Thursday 11 April, 2.00-6.00pm
Shaw Village Hall, The Beeches

STOP LIME DOWN BATTERY STORAGE IN WHITLEY

Drop-in Session
CAWS and fellow villagers on hand to help with filing your objection or answering questions about the scheme
Sunday 21 April, 10.00am-4.00pm
Shaw Village



CAWS
c/o Lagard Farm
First Lane
Whitley
Melksham
Wiltshire
SN12 8RL

25 April 2024

To: Lime Down Solar (Freepost and email)

Dear Sir

STOP LIME DOWN BATTERY STORAGE AT WHITLEY



Island Green Power are planning to build a huge Battery Storage Site in fields above Whitley to store energy generated at their proposed Lime Down Solar Park north of the M4. This proposed battery site will be the size of Whitley and be built on green fields. It will dominate the landscape. It will have an irreversible impact on our village and those who live here.



- Noise, light and visual pollution of our village
- Impact on heritage assets, wildlife, flooding, house prices and more
- Industrialisation of agricultural land

We already have a number of Solar Parks and Battery Storage Sites in the area. If this latest scheme goes ahead the village will be surrounded by renewable schemes! **Surely enough is enough.**

Find out how you can learn more and make your voices heard...



As residents fight battery storage plans, council expresses concern to Government

WILTSHIRE Council has overwhhelingly supported a call for the Government to provide more clarity over its policy for delivering solar farms, as the council says that it has increasing concern over the concentration solar farms in Wiltshire; one such application includes a battery energy storage Whitley, near Melksham. The application to build Lime Down Park includes a battery energy storage system which could be built on fields to the north of Whitley, by Top Lane. Local MP Phil Alford has described the project as a 'huge development' that would be 'visible to the north of Melksham'. Residents have also raised concerns on social media about the proposal, citing loss of wildlife, increased risk of flooding and proximity of lithium batteries to residential areas. One resident said, "If you walk out to where this is planned, you realize that it will be visible for miles; it will be an eyesore for lots in Shaw and Whitley. Walks in the fields up and around the ridge will be dominated by it." The battery energy storage system would be delivered by renewable energy company, Island Green Power. The developer says the site would provide around 500 megawatts (MW) of electricity - enough energy to power around 111,500 homes. The solar park, including the garden on land at Whitley, is proposed to be built across five sites comprising eight cultural level of approximately 870 hectares (2.18 acres) located to the north of the M4, southwest of Melksham. A south site is located on land near the National Grid Melksham Substation near Beausmyth. The Stop Lime Down Solar Group say that proposals for the whole solar park stretch over nearly 5 square miles. (Continued on page 2)



ARE NOT GREEN

go ahead, above Top Lane) could become electrical substation protect our village @gmail.com



S FOR FARMING

July

- Letter to WC re CI&N
- BESS Info Pack
- Letter to LDS chasing replies
- Roz Savage MP letter to SofS
- Submission re Lord Foster Bill
- CAWS LDS EIA Scoping Submission
- "Batteries are not green" paper
- Letter to Engineering Council
- Response to LDS Letter dated 16/07/24
- Letter to Ofgem
- Letter to WC re CI&N
- Press Release

August

- Letter to HSE
- NPPF Consultation Launched
- CAWS BESS WG submission to NP
- Meeting with MP
- Meeting with Luckington PC (John Buckley)
- Brian Mathew MP letter to SofS
- MWPC LDS EIA Scoping Submission
- LDS Questions V4
- FAQ V1
- Letter to Regulators
- 10 Reasons Why paper
- LDS Questions V5
- Letter to HSE
- Letter to LDS re contact with Regulators
- NFCC Consultation Submission
- Fire Safer Risks paper
- Letter to DW F&RS
- Little Chalfield Submission

Brian Mathew MP
Member of Parliament for Melksham & Devizes
House of Commons, London SW1A 0AA
Tel: 020 7219 0000/0000
Email: brian.mathew.mp@parliament.uk

The Right Honourable Ed Milliband
Secretary of State
Department for Energy Security and Net Zero

Thursday, 08 August 2024

Dear Ed,

I met this morning with representatives of the Whitley and Shaw community in my constituency who are deeply, and very understandably, concerned about the proposed Battery Energy storage System (BESS) above Whitley village in Wiltshire.

I have been liaising with my colleague, Roz Savage MP (Cotswolds South) on this issue as the associated proposed 500MW solar farm is planned to be sited within her constituency. She has written to you requesting a meeting to discuss the community's concerns.

I am writing now to reiterate the request for a meeting involving myself, Roz and representatives from both communities.

I, and my constituents, oppose the placing of such a large battery storage facility so close to their village. Some of the key points that have been raised are:

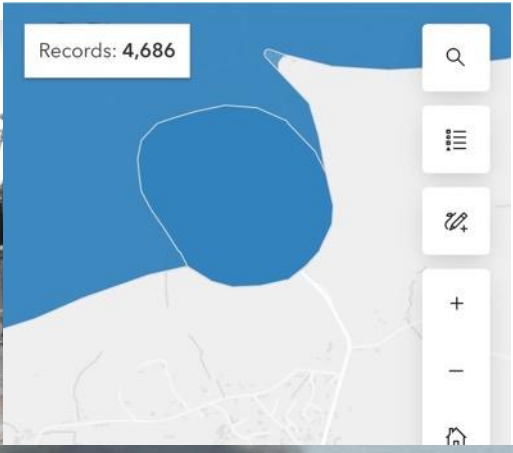
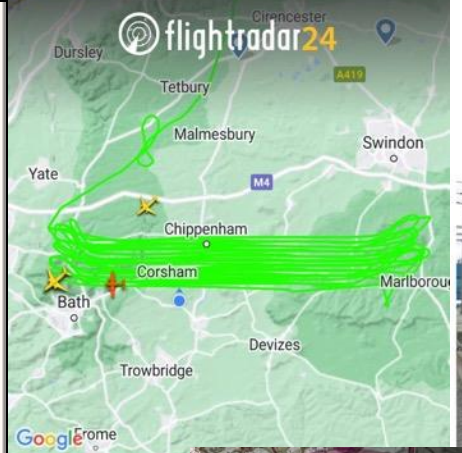
- Whitley is the wrong site for a BESS facility, for multiple reasons including risks associated with safety/fire, flooding/drainage, heritage, landscape, topography, loss of greenfield/agriculture, noise, vibration, wildlife, wellbeing, and cumulative impact.
- There has been unsatisfactory engagement with the developer.
- BESS facilities are currently unregulated.

You will know from my previous correspondence that I am an advocate for renewable energy and storage, but this has to be in the right place, and to my mind, very careful consideration needs to be given in both these cases. The very real fears of the people of Whitley of the placing of such a very large battery storage facility (250MWh) above their village needs to be addressed and another solution found.

I look forward to meeting with you when Parliament returns in the Autumn.

With Best wishes

Brian Mathew



REV6LG F406
RVL Aviation

BHX
BIRMINGHAM

Departed N/A

Reims-Cessna F406 C



Cumulative impact on the character of this landscape has reached crisis point

The sphere of influence from the proposed industrial scale solar farm and battery energy storage system (BESS) called Whistle Mead (Little Chalfield) of just 3.5km overlaps with 10 other solar developments filling the only gap free of solar industrialisation in the vicinity. There is currently over 600 acres of solar development within 5km of the village of Broughton Gifford, the overbearing effects and cumulative impact of such industrialisation in a small rural community is now overwhelming. This small area amounts to 2% of the land area of Wiltshire, with the addition of Whistle Mead it would be fulfilling 40% of the MW target for the entire county.

Wiltshire Council's carbon neutral target for solar renewables for 2030 is 590MW. The current total MW capacity of solar developments (either built, in construction or in planning) in Wiltshire is 1GW, (1,000MW) add in the mega site at Lime Down and it increases to 1.5GW nearly three times the target set for six years time and more than any other county in England. 7 out of 10 of the largest solar developments in England are in Wiltshire.

- Reasons for objection to the Whistle Mead proposal based on the above:**
- 10 industrial solar developments in a tiny area is an unreasonable burden on the communities of Broughton Gifford, Atworth, Holt and South Wraxall and amounts to an adverse cumulative impact
 - The site cannot be fully screened from view. Increases in height and depth of planting would still be devoid of leaves in winter resulting in a dominating and overbearing impact on the surroundings
 - The introduction of an industrial element would harm landscape character, the magnitude is high, and there would be a major adverse impact which is compounded by the proliferation in a small area
 - Once industrialisation is granted on a site, further development and building will follow

Plans are available on Wiltshire Council's website: development.wiltshire.gov.uk/pr/s/ search for the application **PL/2023/01914** or use the QR code displayed. Go to the comments tab to register your views, they will still be received beyond the stated date.

This leaflet has been produced by The Chalfield Residents Group.
For updates on the progress of this application contact: info@chalfieldsolar.co.uk you can also visit the website: chalfieldsolar.co.uk

Battery fires cause major damage to health, life and the environment

An industrial scale solar farm and battery energy storage system (BESS) called Whistle Mead (Little Chalfield) is proposed, comprising over 30,000 panels and 20 shipping containers for battery storage. There is no evidence in the application that the Environment Agency, the Health and Safety Executive, the Fire and Rescue Services and Wessex Water have been consulted. There is no consideration of fire risks and no plan to protect the environment, water supplies or the public against toxic plumes. This proposal has zero regard for its environment or inhabitants.

Li-ion batteries can fail by 'thermal runaway' where overheating in a single faulty cell can spread creating an energy release known as 'battery fires' with potential for huge explosions 20 times the original stored energy. They create the toxic gas Hydrogen Fluoride and highly inflammable gases including Hydrogen, Methane, Ethylene and Carbon Monoxide. Thermal runaway is an electrochemical reaction which once started is uncontrollable by electronics or switchgear. They can only be controlled by extravagant quantities of cooling water which becomes contaminated with hydrofluoric acid.

In Liverpool (Sept 2020) it took 7 million litres of water and 59 hours to control a fire in one single BESS container.

- Reasons for objection to the Whistle Mead proposal:**
- No battery management system (BMS) has been submitted and no risk assessment provided.
 - The proposal is within a "water source protection zone", the risk of fire threatens the safety of the aquifer which provides drinking water for the surrounding villages and towns
 - The scheme would pose an undue burden on fire services who would be diverted from other emergencies thereby exacerbating risk to lives and property in the wider community.
 - There are no hydrants on site, fire-fighting water would need to be brought by tanker through the surrounding area, adding to the burden of the fire service, additionally creating an unacceptable safety risk to road users
 - The vast quantities of contaminated fire water would pollute the immediate environment, discharge into the land drain and head to the pumping station in Holt and on to the River Avon.

Plans are available on Wiltshire Council's website: development.wiltshire.gov.uk/pr/s/ search for the application **PL/2023/01914** or use the QR code displayed. Go to the comments tab to register your views, they will still be received beyond the stated date.

This leaflet has been produced by The Chalfield Residents Group.
For updates on the progress of this application contact: info@chalfieldsolar.co.uk you can also visit the website: chalfieldsolar.co.uk



Who we have written to...



DORSET & WILTSHIRE
FIRE AND RESCUE



NFCC
National Fire
Chiefs Council

Primary Papers and Correspondence (not including emails, messages and notes)

Letters to Lime Down Solar	
Date	Topic
25/04/2024	Stage 1 Submission
14/06/2024	LDS Questions V3
20/06/2024	Stage 1 Consultation ineffective
25/06/2024	Request to be included in SoCC
12/07/2024	Chasing replies
31/07/2024	Response to LDS Letter dated 16/07/24
09/08/2024	LDS Questions V4
17/08/2024	LDS Questions V5
18/08/2024	Advising of contact with Regulators
02/09/2024	Timeline and Questions etc
09/09/2024	Noise

Papers		
Date	Title	Author
05/06/2021	Safety of Grid Scale Lithium-ion Battery Energy Storage Systems	Eurling Dr Edmund Fordham MA PhD CPhys CEng FInstP Dr Wade Allison MA Dphil, Professor of Physics, Fellow of Keble College, Oxford University Professor Sir David Melville CBE FInstP, Professor of Physics, former Vice-Chancellor, University of Kent
30/07/2024	Batteries Are Not Green - Why we challenge the Net Zero credentials of Battery Energy Storage Systems (BESS)	CAWS
16/08/2024	10 Reasons why we say that a BESS at Whitley would be unregulated	CAWS
21/08/2024	Battery Energy Storage System (BESS) Fire Safety Risks	CAWS
29/08/2024	The Scale of the Problem	CAWS
12/09/2024	10 Reasons why BESS have a high carbon footprint	CAWS
12/09/2024	10 Reasons why BESSs are unnecessary	CAWS
12/09/2024	10 BESS Fire Safety Risks	CAWS

Letters to Regulators & Safety Stakeholders		
Date	Organisation	Topic
25/07/2024	PINS	CAWS LDS EIA Scoping Submission
31/07/2014	Engineering Council	Safety/Engineering Standards
31/07/2024	Ofgem	Price inflationary for consumers
01/08/2024	HSE	Safety/Regulation
14/08/2024	Wessex Water	Safety/Regulation
14/08/2024	Drinking Water Inspectorate	Safety/Regulation
14/08/2024	Environment Agency	Safety/Regulation
14/08/2024	Ofwat	Safety/Regulation
14/08/2024	Defra	Safety/Regulation
14/08/2024	UKHSA	Safety/Regulation
17/08/2024	HSE	Safety/Regulation
28/08/2024	D&W F&RS	Safety/Regulation
05/09/2024	HSE	Safety/Regulation

Other Correspondence		
Date	Recipient	Topic
01/07/2024	Cllr Alford, Wiltshire Council	Cumulative impact & necessity
09/07/2024	Dr Brian Mathew MP	Request for help & meeting
31/07/2024	Cllr Botterill	Cumulative impact & necessity
06/08/2024	Dr Brian Mathew MP	Request for help & meeting
06/08/2024	NP Steering Group	CAWS BESS WG submission to NP2B
07/08/2024	NP Steering Group	CAWS submission to NP2B
28/08/2024	Wiltshire Council	Objections to PL/2023/01914 Whistle Mead Solar Farm, Little Chalfield, Melksham, SN12 8NP

Statement from IGP 11 September 2024

“We again express our gratitude to all those who submitted feedback to our Stage One consultation for Lime Down Solar Park, and look forward to soon making the Consultation Summary Report available. If anyone has yet to sign up to our Keep Informed list, please do so at <https://www.limedownsolar.co.uk/register-here> and you will receive a direct notification when this document is made available.

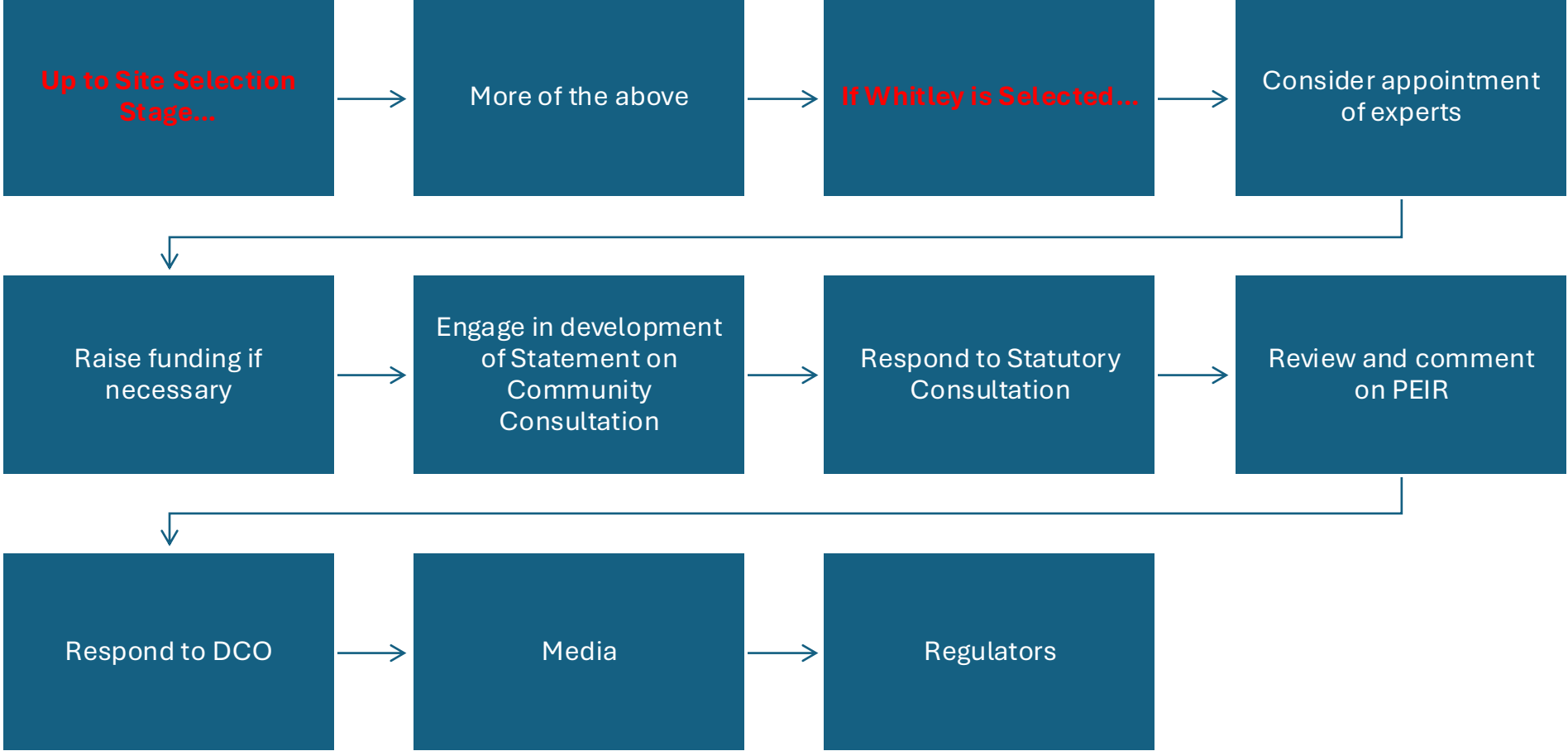
We would also like to acknowledge that the non-statutory Stage One consultation did not include a significant amount of detail regarding our plans for Lime Down, as it was intended as an initial stage of community consultation on an early iteration of the project. The Stage Two Statutory Consultation, which we expect to take place in early 2025, will include much more information on our proposals and we will be consulting you on a more detailed plan for the project.

We remain confident in our plans to generate up to 500 MW of clean, renewable energy while improving local biodiversity and delivering for local communities. Along with proposed energy storage capabilities, our plans for Lime Down also include a community benefits package for onsite and/or offsite enhancements (e.g. public access, recreation and amenity improvements), and we look forward to presenting you with these more detailed proposals at Stage Two.

In the meantime, our communications lines remain open should anyone have any queries regarding the development process and where we are today. Contact us by:

- Email: info@limedownsolar.co.uk
- Freephone information line: 0808 175 6656 (Free of charge)
- Freepost: FREEPOST Lime Down Solar (Free of charge, no need for a stamp)”

Next Steps



Lobby, Meet, Reinforce, Repeat



Outlook?

- We have very strong technical, engineering, environment, and planning positions:
 - Water/Flood
 - Drainage
 - Ecology
 - Heritage
 - Public Health
 - Public Protection
 - Landscape
 - Cumulative Impact
 - Etc

But...

- Net Zero policies encourage such schemes
- There is a lot of money at stake
- The land is available and in same ownership as some of the likely cable run land
- Close to substation
- The safety and security risks are not widely understood
- The developer is very hard nosed
- The developer is assumed to be well financed
- The NSIP process is uncertain (N.B. Lincolnshire and Sussex approvals)



We should focus on how government policy is implemented and discharged

Call for BESS Volunteers



- Water/Drainage/Hydrology
 - review/challenge the developers DCO submission
 - work with external experts if appointed
 - liaise with LPA et al
- Financial Modelling
 - support development of shadow business case and financial model
- Chemistry/Safety
 - challenge HSE et al on COMAH etc
- Marketing and Communications
 - Media
 - Report template

Bagpuss Says ...

NO BATTERY STORAGE SITE IN WHITLEY

If Lime Down Solar proposals go ahead, these fields of oil seed rape above Top Lane could become a sea of industrial batteries with an electrical substation



Join the campaign to protect our village
email whitley.and.shaw@gmail.com

BATTERIES ARE NOT GREEN



Shaw & Whitley Community Emergency Group (CEG)

- Created after the Sept 2014 floods
- Core team
- Call out team
- Grant application in for a SVH antenna, more first aid training, racking, smoke detectors, earthing etc

<https://youtu.be/fj0wDM8Z-S4>





CAWS AGM

12 September 2024

Cllr Phil Alford – Wiltshire Council

Thank You

whitley.and.shaw@gmail.com

